



## **KEEP THE GARAGE STAIRS CLOSED**



For homeowners that have a set of garage stairs, the following is a device to hold garage stairs closed during a hurricane or tornado.

The device is comprised of 2 hasps attached to the frame of the stairs with 2 inch screws and a steel bar with threads that have 2 nuts tighten up to the hasps. Please see the 3 pictures that show this device. These items can be purchased at any home center. (see page 2 for details)

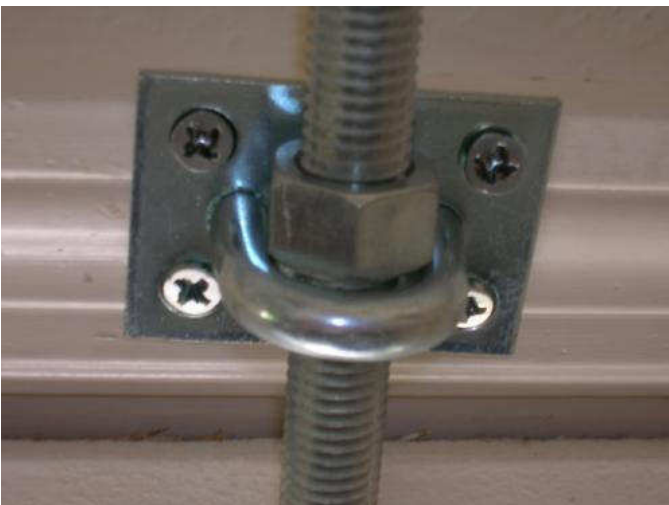
*submitted by:* Barbara Bradley



The bar keeps the door shut.



Secure the hasp into the frame work.



Securing the threaded rod.